



Leadership Group

JANUARY 2025

Together
we enrich
lives

Group Board Members



Caroline Young

Group Chair

Caroline Young is Vice-President of Students and Corporate Services at Queen’s University Belfast and is responsible for all aspects of the student experience delivered through the Directorates of Academic Services, Queen’s Global and Student and Campus Experience. Caroline is also responsible for the leadership of professional services staff across the three Faculties of Arts, Humanities and Social Sciences, Engineering and Physical Sciences and Medicine, Health and Life Sciences.

During her 20 years at Queen’s, Caroline has held a number of senior roles including Director of Accommodation and Hospitality and Director of Student Plus and has been responsible for the University’s Student Accommodation portfolio, including its growth from 1,600 – 3,500 rooms and investment of over £100m. Caroline is a passionate advocate for students, working closely with the Students’ Union to ensure that the University provides a positive and holistic student experience. Parallel to this, Caroline is an advocate for Queen’s as a great place to work and has been committed to creating a positive, creative and supportive workplace.

Prior to Queen’s Caroline worked in Sales, Marketing and Business Development with a variety of hotel companies and golf resorts throughout the UK, Ireland and in Europe. She has extensive senior management experience in the hospitality, service and leisure industry within both commercial and higher education sectors throughout the UK and Europe.

Caroline is passionate about volunteering and is a Non-Executive Board member of Visit Belfast and a Governor of Victoria College Belfast.



Damien Toner

Group Vice Chair

Chair of Choice Services Board

Damien Toner joined Edinburgh University as Director of Estates in January 2023. Prior to joining Edinburgh University, Damien was Director of Estates at Queens University, and a senior Director for one of the UK's largest infrastructure support service companies and has worked in both the public and private sectors. Damien is a Member of the Royal Institution of Chartered Surveyors and a graduate of the University of Ulster with over twenty years' experience in the construction, estates and facilities management industries.



Jennie Donald

Group Board Member

Chair of Tenant & Client
Services Committee

Jennie Donald is Assistant Director of Government Relations and Assurance at Homes England, government’s housing accelerator. Prior to joining the Agency in 2019, she was Head of Strategic Partnerships with Cardiff University. Other recent roles include Deputy Chief Executive of Northern Ireland Federation of Housing Association and Head of Policy and Public Affairs for Ireland at Chartered Institute of Housing.

Jennie also served as the Chair of the Interim Regulatory Committee in the Republic of Ireland from 2014 to 2017, an independent Committee tasked with developing and implementing regulation of the housing association sector and co-producing legislation with the Department of Housing, Planning and Local Government to establish a statutory regulator.

In addition to her role with Choice, Jennie is a Trustee of Cardiff Women’s Aid. Previous external appointments include: Trustee of Depaul Ireland; Board Member and Chair of Business Development Committee of Groundwork NI; Board Member, Company Secretary and Chair of Housing and Property Services Committee of Helm Housing.



Mary Donnelly

Group Board Member

Vice Chair of Tenant &
Client Services Committee

Mary Donnelly is currently employed as an Independent HR Consultant. Mary has over 30 years experience in HR and previous positions include; HR Director Workforce planning at Bank of Ireland, Senior HR Programme and Operations Manager for Ulster Bank, HR Director for O2, Head of Leadership Development for BT and Vice President Human Resources for Bombardier Aerospace Shorts.

Previous external appointments include Board Member for NI Cancer Fund for Children, NI Labour Relations Agency and Civil Service Commissioner.

Mary has successfully obtained an MBA in Business Administration from Roffey Park Management College in Sussex.



Helen Harrison

Group Board Member

Vice Chair of Development
& Assets Committee /
Maple and May Board

Helen Harrison is Director of JUNO Planning & Environmental Ltd. With over 20 years in the industry, Helen was previously all-Ireland Director of Planning at BDP, Head of Planning at Ferguson McIlveen (now Aecom) and spent 4 years as a Senior Planner in local planning authorities in England.

Helen is currently a Board Member of the Chartered Institute of Housing, an Executive Committee Member (former Chair) of the Royal Town Planning Institute (RTPI) and is highly respected in the planning industry acting as RTPI Professional Accreditation Advisor to Queen's University Planning School and External Examiner to Ulster University Planning School.



Robin Hawe

Group Board Member

Chair of Development & Assets
Committee / Maple and May Board

Robin Hawe has 42 years' experience of working in social housing with the Northern Ireland Housing Executive. This includes housing service delivery and the delivery of large scale and complex housing projects.

During this period, Robin has developed his skills in innovative and strategic thinking concerning land asset management and the delivery of affordable and social housing in support of sustainable communities. He has considerable experience in planning and the legal and technical aspects of the assembly, acquisition and vesting of land.

Robin has detailed knowledge of affordable and social housing needs assessments, economic appraisal processes and housing regeneration strategies, including Estate Strategies, Urban Renewal Areas and Building Successful Communities Areas. In addition, Robin has been a Board member of Belfast Healthy Cities and Landmark East.



Donal MacAteer

Group Board Member

Chair of Finance Committee

Donal MacAteer is an experienced finance professional whose career has spanned corporate banking, financial leadership and strategic advisory roles. A chartered accountant by qualification, he brings an understanding of financial governance, risk management and corporate strategy.

Donal is currently CFO of Drinksology Kirker Greer, a group of companies spanning the creation and ownership of premium spirit alcohol brands, an e-commerce platform specialising in the sale of wines and spirits both direct to consumer and to trade, and an innovative creative agency serving the spirit alcohol industry globally. In his role, he oversees financial planning, capital raising, risk management and strategic investment decisions and has responsibility for aligning diverse business units under a unified financial strategy. He previously spent 6 years as Group CFO of Devenish Nutrition Group. During this time, the Group turnover increased from £100m to £225m, with 4 new manufacturing sites established, and organic growth was complemented by several business acquisitions and joint venture investments in UK, US and Europe.

Prior to his experience in Devenish Nutrition, he worked in the Corporate Banking Division of Bank of Ireland for 10 years, latterly as Director of Corporate Banking NI, and spent 6 years in Corporate Banking in Northern Bank (Danske) and two years in the Corporate Finance and Restructuring Division of Invest NI.

Donal's background in corporate banking gives him a unique perspective on debt structuring and investment management. Having served as a CFO in diverse and complex organisations, he has experience in financial planning, capital markets and operational effectiveness, with a valuable understanding of risk and compliance.



Michael McKinstry

Group Board Member

Vice Chair of Finance Committee

Michael McKinstry is a highly experienced executive with extensive knowledge and experience working at a senior board level within the regulated energy sector during a period of rapid development and change. He has unique experience in the development of a private sector led greenfield gas infrastructure investment with direct strategic and operational experience with regard to governance, under differing ownership structures, regulation and business support, finance and commercial management, retail and energy trading, corporate finance, reorganisation and change, ESG and human resource management.

Michael has recently retired as Group Chief Executive Officer (of the Phoenix Natural Gas Limited after 27 years within the business. He joined Phoenix in 1996 on its formation, initially as Group CFO before being appointed Group CEO in 2014. Throughout Michael's tenure in Phoenix he was a key member of the leadership team delivering strategic and operational direction to the business throughout a dynamic period of development, growth and change.

Prior to joining Phoenix, Michael undertook various financial management roles across a broad range of business sectors including heavy engineering at GEC in Larne, textiles with Ulster weavers in Belfast and power generation with Premier Power at Ballylumford.

Michael is a qualified accountant, a member of the Institute of Directors and holds various governance roles in the education and charitable sectors.



Caralyn Scales

Group Board Member

Chair of Audit & Risk Committee

Caralyn Scales is currently a Senior Manager within PwC and has recently moved across following her position as Head of Operational Risk - Group Transformation with Lloyds Banking Group. With over 20 years' experience in Financial services, she brings over 10 years' experience in managing risk (operational and compliance) within a Retail Banking Operational environment – laterally within the Digital Division.

Caralyn has been charged with building out the Operational Risk operation within PwC Belfast in order to deliver on behalf of clients throughout the UK. Bringing advanced knowledge from her last role as Head of Operational Risk – Digital & Transformation where she was responsible for the identification of current & future strategic risks within Retail and Digital areas of what is now the UK's largest Bank. Her new remit is to ensure Clients can safely operate their business with the clarity and management of all identified and realised risks i.e. recording, identifying a treatment solution (accept the risk, minimise it or close it) and to provide strategic recommendations to the Directorate.

Caralyn has a genuine interest in actively building additional skills through many ways including keeping involved in the local community, recently chairing the Board of Governors at a local school, setting up and running the local junior parkrun and regularly fundraising for various causes.



David Tate

Group Board Member

Development & Assets Committee /
Maple and May Board Member

David Tate is a Chartered Accountant by career and former Chairman of the Ulster Society of Chartered Accountants.

David is currently employed as a Banking Consultant working with AIB (UK) on change projects and process improvement assignments in the Credit Risk environment. He has previously worked with Grant Thornton, on third party portfolio management assignments in the financial sector.

David is an accomplished senior Credit Risk executive with expertise in the strategic management of Corporate and Retail banking portfolios. He held various senior executive positions in Credit Risk Management within Danske Bank (1999 to 2019) where he was Head of Credit for circa 12 years. He also had a 15-year consulting career with KPMG (2½ years in Melbourne, Australia) focused on Corporate Finance and in Corporate Recovery with Goldblatt McGuigan.

David's career to date has allowed him to develop strong skills in the management of transformational change. He has significant Risk Management experience, including the establishment, monitoring and maintenance of a Risk Appetite Framework.

David is comfortable operating in a heavily regulated sectors with a strong focus on compliance with regulatory guidelines, legislation, and international operating frameworks. He also has expertise in Policy & Strategy Implementation.



Gráinne Walsh

Group Board Member

Vice Chair of Audit
& Risk Committee

Gráinne Walsh has been supporting organisations to shape the political and policy landscape in Northern Ireland for over eighteen years. A native of Dublin, she has worked across all government departments and with every party over the lifetime of five assemblies, as well as extensive engagement at Westminster, Whitehall and at local government level.

Gráinne provides strategic communications and government relations advice to leaders across business, VCSE and public sectors in Northern Ireland. She brings insight to politics and public policy drawing on her most recent experience of supporting businesses and charities to navigate the UK's exit from the EU as well as responding to the challenges of COVID-19.

Gráinne is a member of the Public Affairs Board of the PRCA, Housing Rights and the IoD Northern Ireland Regional Committee. Other roles include Advisory Panel Member Collaboration in Training and Innovation for Growing, Evolving and Networked Societies (CITI-GENS); Expert witness to the UK Citizens' Assembly on Democracy; and Advisory Panel Member JRF Ulster University research into Universal Credit in Northern Ireland.



Suzanne Wylie

Group Board Member

Development & Assets
Committee Member

Suzanne Wylie became the CEO of the Northern Ireland Chamber of Commerce in August 2023.

Previous to that she has held significant leadership roles in public services for over 15 years, most recently as the CEO to the Jersey Government, and prior to that, as CEO of Belfast City Council. Suzanne has led these organisations to focus on improving services to customers and also to implement a number of game-changing programmes to transform the future prosperity and sustainability of the places she represented.

In Jersey this involved supporting the Government in the delivery of a mini-budget to address cost of living increases; development of new housing affordability programmes; and oversight of a number of arms length bodies, including Andium Homes. The Public Services that she had responsibility for included health services, education, skills, social security, children's social care, economic development, infrastructure and international relations.

In Northern Ireland, Suzanne was instrumental in securing the £1bn Belfast City Region Deal, which is leveraging public and private finance to boost business capability in innovation and technology, as well as enhancing a range of tourism assets. She also oversaw the delivery of a comprehensive regeneration strategy for Belfast, presenting NI as a place for investment in offices, hotels, visitor attractions, housing and jobs.

Suzanne is passionate about carbon reduction and has worked in both jurisdictions on the development of Carbon Reduction Road Maps. She has also worked on many programmes aimed at addressing inequalities and deprivation.

She was awarded an OBE in the Queen's Jubilee Honours, received an honorary doctorate from Queens earlier this summer, where she also completed her MBA, and is a fellow of the Institute of Directors.

Committee & Subsidiary Board Members



Mark Adrain

Vice Chair of
Choice Services Board

As Group Property Director at Henderson Group, Mark Adrain operates at board level and is a key driver of growth in one of Northern Ireland's most successful local companies with an annual turnover of over £1bn. With over 26 years' experience in the Northern Ireland property sector, he has built up a wide network of relationships across the business and public sectors.

He leads all elements of the capital investment approval process for the Group, manages robust assessments of all investment returns, oversees research and assessment of new and developing property income streams and manages expansion of multiple income streams to augment and support the core business.

As Group Acquisition Strategy lead, he developed a strategically focussed acquisition and site expansion programme to achieve the Henderson Retail's 2026 vision for expansion and spearheads the growth strategy for Henderson Group Property successfully delivering on growth KPIs, goals and objectives set by the shareholders over the past 15 years. He heads up a multi-functional team which is responsible for procurement, construction, maintenance, energy management, retail proposition development and rates.



Karen Bailey

Tenant & Client Services
Committee Member

Karen Bailey is the Chief Executive of the Business Services Organisation (BSO), one of the major Health & Social Care organisations delivering a complex mix of support services to Health & Social Care.

BSO employs approximately 1500 staff with an annual core budget of more than £176m and is a unique Arms-Length Body in that only 20% of income is derived directly from the Department of Health, the remainder is secured through contracts with HSC customer organisations.

She is the Accountable Officer (AO) for BSO reporting to the Permanent Secretary and has a close working relationship with the Chair and a team of five Non-executives Directors. She reports to the Board monthly and ensures strong systems of control, quality management, risk and assurance are in place.

Karen is highly qualified, educated to Master's Level (MBA and MSc), has completed levels 1 and 2 of the Institute of Director's Chartered Director Programme, and the CIPFA Certified NQF Level 3 in Governance among other professional development.



Mark Baillie

Tenant & Client Services
Committee Member

Mark Baillie is Head of Policy and Programmes at Homeless Connect, the representative body for the homelessness sector in Northern Ireland.

Before joining Homeless Connect, he studied Law with Politics at Queens University Belfast before going on to work for a social policy charity in Belfast.

Mark leads on the policy and public affairs work for Homeless Connect as well as having responsibility for member programmes provided by the organisation. He provides the secretariat for the All Party on Homelessness at the Northern Ireland Assembly and regularly engages with policymakers and elected representatives across the political spectrum on issues related to homelessness.



Stuart Davies

Choice Services Board Member

Stuart Davies (CIHCM) is a corporate member of the Chartered Institute of Housing, he has worked in the affordable housing sector for over 35 years and operated at an Executive or Director level within Housing Associations in England between 1999 and 2020 before setting up his own consultancy in April 2020.

Since 2020 Stuart has predominantly supported Housing Bodies in the Republic of Ireland both helping them to restructure but also in project managing the first social housing Public Private Partnership moving homes of development and into full management.

As well as his appointment to Choice Services, Stuart is a Board member at Teign Housing and Chair of their subsidiary maintenance organisation Templar Home Build.



Stephen Elliott

Finance Committee Member /
Audit & Risk Committee Member

Stephen Elliott is a very experienced and accomplished Finance Director with over 35 years' experience in manufacturing, construction and development and the food and drink industry. Throughout all of his roles he has supported and led finance teams, with constructive challenge, to deliver more relevant and timely information for decision making. Stephen has recently retired from the role of Group Finance Director with Dale Farm, one of Northern Ireland's most recognised businesses. In that role he was responsible for all the financial affairs of the Dale Farm Cooperative group which is the largest cooperative in the UK processing over 1 billion litres of its members milk and employing 1250 staff.

Between 2000 and 2013, Stephen was Group Finance Director of the Mivan Group which was a privately owned group operating in interior fit-outs, property development, construction, theming and ship outfitting. Prior to that, between 1985 and 2000, Stephen was a key member of the senior management team of Boxmore Group, a large group of packaging companies, quoted on both the London and Irish Stock Exchanges. He ultimately became Group Finance Director, reporting directly to the Group Chief Executive, and was responsible for the financial affairs of a Group which had 19 operating units in Ireland, England, Wales, France, Germany, Belgium, South Africa and China.



Roy Hamill

Tenant & Client Services
Committee Member

Roy Hamill has over 38 years' experience working across a range of public sector organisations in health and social care. He is currently operationally responsible for the delivery of a range of core community-based services such as community integrated teams (social work, occupational therapy, and district nursing) and treatment room services. In addition, he has responsibility for a number of Trust wide services such as Wheelchair services, continence services, community equipment services and podiatry.

He also provides the interface to acute services in the delivery of acute OT services and intermediate care services through Trust Recovery services and community discharge coordination.

Roy provides leadership to the development of E-Health in areas of telemonitoring, telecare and assistive technology. Alongside this, he participates in the development and implementation of IT solutions to support professional practice.

He is Director of Community Care and a member of the Trust's Operational Management Team, advising the Trust Board and Chief Executive/Deputy Chief Executive on all issues relating to policy, statutory requirements, professional practice, and workforce requirements pertaining to the development and delivery of a range of high quality, safe, effective, and patient-centred services within the Northern Trust area. As a member of the Senior Management Team, he shares corporate responsibility for the achievement of the Trust's corporate objectives.



Elaine Hartin

Finance Committee Member

Elaine Hartin has 25 years' experience working in senior management roles in the public and private sector. A chartered accountant by qualification, she brings an understanding of financial governance, risk management and corporate strategy.

Elaine is currently working as the Chief Strategy and Finance Officer at Ulster University, playing a major role in institution-wide strategic leadership and planning, including shaping institutional strategies and priorities and aligning institutional resources to deliver against these.

Prior to joining the University in 2021, Elaine was Chief Operating Officer at Belfast Metropolitan College and a Director in Deloitte. She has a strong public service ethos and has contributed significantly to the sustainable success of a number of large complex organisation while maintaining strategic and financial oversight.

Elaine has also served on a range of boards and panels, including accepting a Prime Ministerial Appointment to serve as the NI representative on a Pay Review Body.



Peter Johnston

Finance Committee Member

Peter Johnston is a graduate of Queens University Belfast, qualified as a Chartered Accountant with Deloitte and is a member of the Institute of Directors.

He has over 35 years' experience working in a wide range of business sectors, including renewable energy, building products, engineering, consumer goods and pharmaceuticals, and has operated as a Chief Financial Officer/Finance Director for the past 25 years.

Peter spent much of his career as a Finance Director with the Kingspan Group plc, during a period of extensive organic and acquisition growth across Europe and the USA. Latterly, he was CFO with Norbrook Laboratories, one of the world's largest privately owned veterinary pharmaceutical companies, operating within a highly regulated environment.

Peter has extensive Board level experience, where he has had responsibility for audit and risk management.



Siobhan Lynch

Development & Assets Committee /
Maple and May Board Member

Siobhan Lynch has over 30 years' experience in the hospitality and tourism sector and is currently Director of Operations at Titanic Belfast, a World Leading Attraction which opened in 2012 and to date has welcomed over 7 million visitors from 145 countries across the world. She has direct responsibility for Visitor Attraction, Facilities Management, Hospitality and the Operational management areas of the business with a strong focus on customer service.

As a member of the Senior Management Team, Siobhan has responsibility for setting the strategic direction of the organisation; developing, reviewing and monitoring company policy; developing business opportunities; approving and overseeing capital investment programmes; reviewing business results and monitoring KPI's; setting and monitoring financial budgets; providing gap analysis across all areas of the operation and working with the TB and MBT (Maritime Belfast Trust) Boards and other stakeholders.

Prior to joining Titanic Belfast, Siobhan undertook various leadership roles for both independently owned and global companies including G4S Facilities Management, The Mount Charles Group and Mooney Hotel Group.



Dave Mayner

Tenant & Client Services
Committee Member

Dave Mayner has worked in social housing for more than 26 years, delivering all the core housing management functions. Before returning to Ireland, he spent his career in England, working for several different housing providers including some of the largest in England (Places for People and The Guinness Partnership) as well as smaller regional and local providers.

He has operated in senior management positions since 2010 and at director level since 2017, when he joined Onward Homes, a 35,000-home housing association based in the north west of England. Here he played a leading role in implementing the organisational amalgamation which created Onward.

He is currently employed by Cooperative Housing Ireland as Director of Housing Services and Community Engagement. Dave has a background in delivering effective transformational change while maintaining high levels of performance. He has a passion for quality, customer service and maximising social benefit. Dave has a Masters degree in Business Administration and a post-graduate diploma in housing studies.



Rory McConnell

Development & Assets
Committee / Maple and
May Board Member

Rory McConnell is a Qualified Chartered Surveyor and a Member of the Royal Institution of Chartered Surveyors (MRICS). He has 48 years' property experience working in private practice, based in and around Belfast and across Northern Ireland. He started work with Alexander Reid & Frazer in Belfast in 1975, joining his father in McConnell Martin in November 1976, and becoming a Partner in 1986. In 2010 he was instrumental in bringing the two sides of the of the family firm, McConnell Martin, and Brown McConnell Clark McKee, back together to form McConnell Chartered Surveyors. In early 2021 he retired as a Director at McConnells (remaining as a Consultant until 2022) to form his own company RDR NI Ltd., taking over the management of Kilroot Business Park, Carrickfergus.

Rory has a wealth of experience across the board, from Commercial and Investment Agency, through Development Appraisal & Consultancy, Valuation, and Property Management. At McConnell Martin he negotiated an Alliance Partnership with King Sturge, which ultimately resulted in McConnell's Global Alliance with JLL. In February 2021 Kilroot Business Park, a 60 acre / 700,000 sq ft mixed use facility in Carrickfergus, was acquired by an English JV Partnership, and the opportunity arose to take the management, letting and development of the Park in-house. Including Rent, Service Charge, and Electricity income, Kilroot has a turnover in excess of £4m pa, and by May 2023 the Park was fully let, with Net Operating Income having almost doubled since acquisition.



Gerry Millar

Maple and May
Board Member

Gerry Millar is a Chartered Surveyor with a lengthy career in property and construction in the private and public sectors, including close engagement with the community sector.

Following a period as a programme planner for a construction company, Gerry joined the Housing Executive where he worked for approximately seven years dealing with Housing Action Areas and various grant schemes.

Prior to his retirement in 2019, Gerry also worked at Belfast City Council where he held several positions including Director of Improvement addressing change management, and Director of Property and Projects. As Director of Property and Projects, Gerry was responsible for the Council estate and a major capital programme across the city including a wide range of regeneration schemes.

Currently, Gerry is a Maple and May Board Member, an expert advisor to MAG, and Strategic Advisor to SIB.



Ignatius (Iggy) O'Doherty

Audit & Risk Committee Member

Iggy O'Doherty has a wealth of relevant experience, both executive and non-executive including, until recently retired, as a senior digital leader with over 35 years' experience leading digital transformation and innovation initiatives across NI Government departments. Iggy was Director of Digital Shared Services in NI Civil Service from 2019-2023; Chief ICT Strategy Officer in NICS from 2012-2019; Chair of Simon Community NI from 2017-2022 and; a Non-Executive Board member and Chair of Audit & Risk Committee at Simon Community NI between 2014-2017.

Iggy brings a range of skills including: Leadership; Strategic planning and development; Digital enabling business transformation; Programme management; Governance and risk management; Procurement & contract management; Cyber security and Data analytics.

Iggy was awarded a BeITel Award in 2022 in recognition of his leadership and collaboration in delivering innovative and rapid digital solutions during the Covid-19 pandemic.



Trevor Rea

Choice Services Board Member

For approximately 20 years Trevor Rea was the nominated Service Manager on the Pan Government Property Management Contract which delivered a comprehensive property maintenance service to an Estate of 2200 properties. As Deputy Director of Property Services Division (PSD) he was responsible for the management of the planned maintenance to both the DoF Office Estate and wider public sector assets in Northern Ireland. PSD manages an estate of approximately 1200 sites consisting of offices, educational facilities, laboratories, emergency services and historic monuments as well as some public attractions such as the Crumlin Road Gaol and the Armagh Observatory.

In PSD he managed a cohort of over one hundred staff including Architects, Quantity Surveyors, M&E Engineers, Building Surveyors, Fire Services Engineers and Supplies and Stores staff all supported by a Central Administrative Team. He contributed to the CPD Senior Management Team and helped develop the procurement strategy for several iterations of the Pan Government Property Management Frameworks 2003 – 2019. He also revised the QA Management processes and successfully retained ISO 9001 accreditation through each independent annual review.

For many years, Trevor was a member of the finance team which managed the budget for the maintenance of the DoF office estate, which demanded continuous monitoring of expenditure, (including accrual reporting) to ensure that the budget was spent in accordance with the fiscal guidelines and associated policies.



John Roden

Development & Assets
Committee / Maple and
May Board Member

John Roden is a chartered construction professional with over 25 years' industry experience and has worked on a wide variety of both public and private projects throughout Northern Ireland and the UK. His experience includes working with multi-discipline integrated design teams and multi-faceted clients across the public and private sectors.

As a Member of the Chartered Institute of Building and the Association for Project Management, John has delivered many multimillion-pound healthcare, education, and commercial schemes throughout his career. He is currently Director and owner at PURE Construction Management Limited which provides services to developers, clients, contractors, and suppliers.



Bernie Rooney

Audit & Risk Committee Member

Bernie Rooney is a retired Senior Civil Servant with a wide range of experience spanning a number of NI Government Departments including: Department for Communities; Department for the Economy; Department for Infrastructure; the Department of the Environment; and The Executive Office. She has extensive experience of working for NI Executive Ministers and Direct Rule Ministers with a comprehensive understanding, knowledge and experience of the Machinery of Government in Northern Ireland and of working in collaboration across jurisdictions.

Bernie has undertaken a variety of roles during her career, covering policy, operational delivery, service transformation, oversight of arm's length bodies (including the Northern Ireland Housing Executive) and programme management. Bernie has a strong track record of leading large operational public sector organisations to reach their goals and was awarded a national Civil Service Leadership Award in recognition of her achievements.



Michael Wilson

Audit & Risk Committee Member

Michael Wilson is a former Managing Partner of Elliott Duffy Garrett Solicitors, and has been a Consultant to the firm since 2017. He has over 45 years' experience as a solicitor, including 24 years as a Licensed Insolvency Practitioner.

He currently specialises in regulatory and governance matters, providing strategic advice at Board and senior management level to commercial, publicly funded and charity clients. He is also an accredited mediator. In addition, he acts as the Protector (or Special Trustee) of the Gallaher Trust, overseeing the work of the charity's Trustees.

Michael is currently the Chair of The James Kane Foundation (an education, skills and employment charity) and a Governor of St Malachy's College, Belfast.

He is a member of the Appeals Panel of Chartered Accountants Ireland, and has previously been President of the Solicitors Disciplinary Tribunal and the Legal Chair of the Statutory Hearings Committee of the Pharmaceutical Society of Northern Ireland.



William Wilson

Chair of Choice
Community Network
Tenant & Client Services
Committee Member

William Wilson has been a Choice Tenant for over 7 years and during this time has been an active member on the Choice Community Network. He is currently Chair of the Choice Central Network and his Area Network.

William owned his own haulage business for 35 years having worked in Du Pont as a clerk in the Transport Department for 5 years prior to that.

A sports lover, he has played a lot of cricket as well as, soccer, rugby, golf and volleyball amongst others. He was President of Cricket Ireland last year and is currently a Committee member in his own club in Derry~Londonerry.

Senior Management Team



Michael McDonnell

Group Chief Executive

Michael McDonnell qualified as a Chartered Accountant with KPMG in 1989 and worked for many years as a partner in BDO, a leading global professional services firm. He has worked in leadership roles within both the private and not-for-profit sectors across the British Isles, including time with PA Consulting Group and G4S plc. He joined Choice in January 2016 having been Chief Executive of Helm Housing.

Michael has a First Class Honours degree in Accounting & Financial Analysis from the University of Warwick, and a Post-graduate Diploma from Queen's University Belfast. He has attended a number of leading business schools across Europe and North America. Michael is also a Fellow of the Chartered Institute of Housing.



Jon Anderson

Group Director of Development

Jon Anderson is Group Director of Development within Choice. He joined the organisation in January 2017 with a remit to expand our operations into both the private rental sector and within the residential development market.

He qualified as a Chartered Surveyor in 2004 and worked for many years as a Director in Colliers International, a leading global property consultancy. He has primarily worked within the private sector with roles including commercial and residential property management, development consultancy, investment appraisal and land acquisition. Latterly, he has acted as property / investment advisor to a number of global financial institutions and investment firms.

Maple and May, a wholly owned subsidiary of Choice was launched in February 2018 and is exploring opportunities to expand its private rental and sales portfolio throughout Northern Ireland.



Carol Ervine

Group Director of Tenant
& Client Services

Carol Ervine has 26 years' experience in the social housing arena and holds an MBA and BA (Hons) from the Ulster University.

Starting her housing career with Ulidia Housing Association in 1992, Carol held various positions within the organisation as her responsibilities grew.

As a member of the Senior Management Team, Carol held the post of Director of Corporate Services & Finance for over 15 years, until the organisation merged with Oaklee Trinity in June 2015. Carol's current position is Group Director of Tenant & Client Services which encompasses Property Services, Housing Management, Services Centre and the Tenants' Forum.



Wilton Farrelly

Group Director of Asset Services

Wilton Farrelly is an experienced property and services professional.

With a BSc in Estate Management he subsequently qualified as a Chartered Surveyor and following a career in the Facilities Management industry, is a Fellow of the Institute of Workplace and Facilities Management (IWFM).

In his previous role he developed a services business in H&J Martin, which over 15 years grew to an annual turnover of £35m and a team of 250+ staff. He has worked in both the public and private sectors as well as having spent four years self-employed. In 2017 he helped set up Choice Services and is focused on developing it in to the leading Direct Services Organisation in Ireland. Wilton has experience of servicing clients in the public, commercial and private sectors and has a strong commercial and customer focus.



Lawrence Jackson

Group Director of
Corporate Services

Lawrence Jackson is a HR Professional with over 22 years experience gained both in consultancy and in-house positions. He has held senior HR roles within multi-site, blue chip private, public and semi-state organisations in Ireland including the BBC, Bank of Ireland, Guinness and Harland and Wolff.

He joined Choice in July 2016 after running his own consultancy business for a number of years. Lawrence attained a PhD in Psychology from Queen's University Belfast.



Michael Rafferty

Group Director of
Finance & Resources

Michael Rafferty has over 25 years experience of working in senior finance positions across the public, private and not-for-profit sectors. He holds an accountancy degree and postgraduate diploma in accounting from Queen’s University. He qualified as a Chartered Accountant with PWC in 1990 and was awarded the Northern Bank prize as the top Northern Ireland student. He also holds an MBA from Queen’s University, Belfast. He worked as a senior consultant for both PWC and Deloitte where he specialised in financial management, financial systems and PPP/PFI projects.

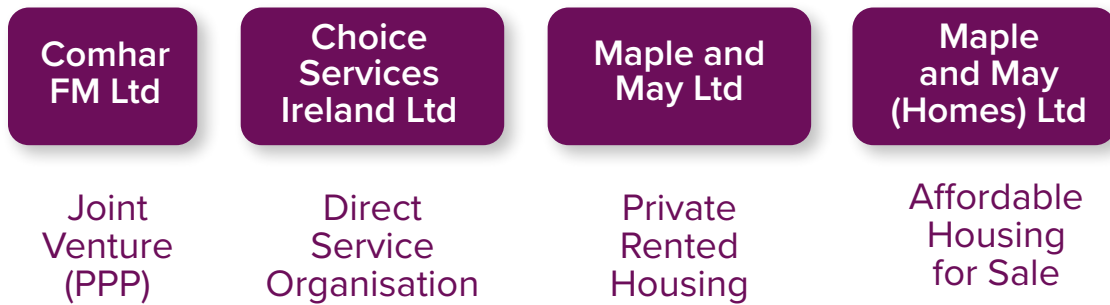
He has supported many large organisations through significant change processes, with particular emphasis on improving value for money. Since 2003 he has been Finance Director for Choice (and its predecessors) where he has played a key role in leading change through introducing innovative funding, improving systems and developing a strategy based on organisational change.

Choice Group Corporate Governance Structure

Group Board

Choice Housing Ireland Limited

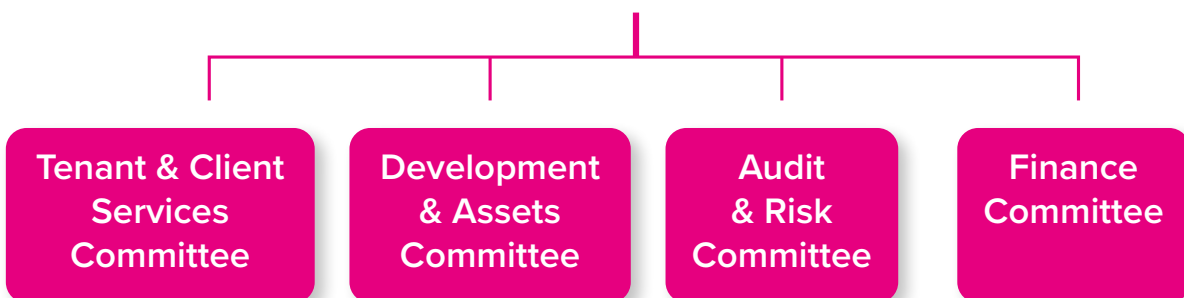
Group Companies



Group Board

Choice Housing Ireland Limited

Committees





**Choice Housing
Ireland Limited**
Leslie Morrell House
37 - 41 May Street
Belfast
BT1 4DN

T: 0300 111 2211
choice-housing.org

