

Supported Housing

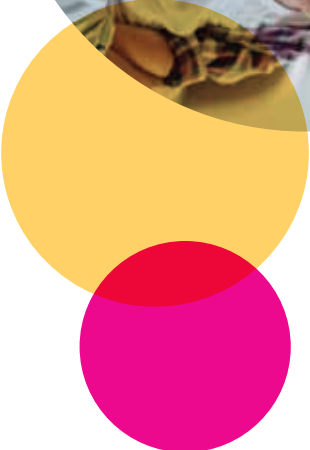
All applications for supported housing must be accompanied by a referral form completed by the relevant Area Social Work Team except for those applying for temporary accommodation.

Applying for Housing from outside Northern Ireland

If you currently live outside Northern Ireland your eligibility for housing and your housing needs will be assessed in the same way as any other applicant.

However, as the Housing Executive cannot carry out an assessment visit you will need to complete the Housing/ Transfer Application Form and the Self-Assessment Form which is available to download from our website.

Eligible older persons who wish to return to Northern Ireland from overseas (through the Safe Home programme www.safehomeireland.com) may also be considered.



If you would like further information on our housing stock and immediately available properties, contact us:

Choice

Leslie Morrell House
37 - 41 May Street
Belfast
BT1 4DN

T: 0300 111 2211
choice-housing.org



Information for
Housing Applicants



Working
together for
positive change

choice-housing.org

INFORMATION FOR HOUSING APPLICANTS

At Choice we provide high quality homes and support services to help meet the diverse needs of a wide range of customers including; older people, families, mature single people, couples and people with complex needs. Our personal and professional services are underpinned by decades of experience helping people find the right home for them. We know everyone has different needs and that these may change as time moves on, which is why we get to know our customers as individuals. We provide various housing options detailed below.

General Needs and Family Housing

The term 'General Needs Housing' is used to describe housing for rent that is suitable for anyone over the age of 18 who does not require any help or support, including single people, couples or families. The accommodation is normally provided in self-contained bungalows, houses, apartments or maisonettes.

All of our new homes are built to Lifetime Homes standards, which means they can be modified in certain ways if necessary to meet the changing needs of tenants or household members due to disability or age. In many cases this can help prevent the need to move to alternative accommodation.

Sheltered Living for Older People

Choice have over 60 sheltered living schemes across Northern Ireland which enables older people to live independently and privately in their own dwelling within a safe, friendly and supportive environment.

There are many different types of sheltered housing schemes and most have an on-site scheme co-ordinator. All of our sheltered dwellings are linked to a 24-hour call centre to assist tenants in an emergency. Tenants can also have the added security of a pendant alarm if required.

Our aim is to ensure tenants feel safe, enjoy their privacy and independence, and have the opportunity to participate in social activities if they wish.

Supported Housing

Choice work with more than 45 Care & Support Providers and have in excess of 170 services in supported housing.

The Supported Living model varies by scheme in accordance with the level of support required.

The Association offers hostel accommodation, residential care homes, women's refuges and various types of shared/self-contained supported accommodation. The support provided can range from 24hr to minimal floating support.



choice

To apply for accommodation applicants must be at least 18 years of age and have a substantial connection with Northern Ireland. Applicants under 18 can be considered in certain circumstances.

An application form can be requested in the following ways:

- Contacting the Housing Executive on **03448 920 900** or by downloading the application from their website www.nihe.gov.uk
- Visit any Housing Executive or Housing Association office.
- Calling Choice Housing on **0300 111 2211** or by downloading the application from our website www.choice-housing.org

The completed application form must be returned to your local Housing Executive office.

When completing the form you will be asked to select a number of areas where you would like to live. You should think carefully about the areas you choose, ensuring that they will meet your needs in relation to amenities and proximity to transport links, schools and family support.

The Housing Executive will assess your application in accordance with the rules of the Housing Selection Scheme, taking account of your current housing conditions and health and social wellbeing factors. Following assessment, the Housing Executive will make a decision as to your eligibility for housing and will award housing points which determine your position on the waiting list.

Position on the list is subject to change and it is important to report any change of circumstances to the Housing Executive as this can affect your housing application.

When a vacancy arises within our housing stock our staff will match the property with appropriate applicants on the basis of housing need in accordance with the Rules of the Housing Selection Scheme.